

INTER  
FILLING



Premium  
Gel Products



# Interfilling *as a company*

# Complete Nail Care *Manufacturing Solutions*

Founded in 2013, Interfilling is a global player providing filling, packaging, and assembly services from concept to finished product. From our production facility in the Netherlands, we specialize in products for the nail care, cosmetics, home care, and personal care industries.

Interfilling also offers a wide range of packaging available from stock, including bottles, brushes, caps, pouches, and jars.

For nail care brands, we supply high-quality gel polish formulations in bulk, available in 500 ml or 1000 ml sizes. This allows both emerging and established brands to develop their own gel polish collections with greater flexibility and lower entry volumes.

By combining bulk supply with filling, packaging, and assembly services, Interfilling provides a complete solution for launching and scaling nail care products.



Interfilling operates according to the highest quality standards. Our facility is **ISO 22716** certified and FDA registered, supporting safe, reliable and compliant production.



# Product overview

<b>Easy squeeze bottles</b>	10
<b>Base gels</b>	12
<b>Top gels</b>	13
<b>Fiber gels</b>	14
<b>Gummy gels</b>	16
<b>Build it up gels</b>	20
<b>Gel Polish colors</b>	22
<b>Dipping powder glue</b>	38

✓ Best European Quality   ✓ EU Compliant   ✓ Professional Quality   ✓ HEMA & TPO free





# Premium Gel Products *in bottles*

# Easy Squeeze Bottles



**Refill 500ml**

-  Refill bottle with easy-squeeze cap for quick, clean, and precise filling
-  Sustainable packaging manufactured in recycled HDPE
-  100% UV resistant
-  Label made from recycled material



**Refill 1000ml**

-  Refill bottle with easy-squeeze cap for quick, clean, and precise filling
-  Sustainable packaging manufactured in recycled HDPE
-  100% UV resistant
-  Label made from recycled material
-  Filling into final packaging, for example in gel bottle.



# Quality Control

Thanks to carefully selected raw materials and thoroughly tested formulations, quality is built into every product from the start. Before commercial production, formulations are evaluated for functionality, stability, and reliability.

During production, our Quality Control team applies extensive expertise to ensure every batch meets the highest standards. Multiple checks throughout the process guarantee consistent quality and performance.

Our approach combines analytical testing, physical evaluation, and performance checks, ensuring that every product meets the strict expectations of our customers.



# Base Gels

## Pro GelPolish Base

TPO free  
4029501

This is our professional base gel. It is the first step in a three-phase gel system, designed to deliver longer-lasting wear with enhanced adhesion properties, but still fast to remove. Perfect for those seeking long wear with a quick, easy process.

- 21 day wear
- Moderate soakability
- UV
- UV/LED
- TPO free

## Pro GelPolish Base

TPO & HEMA free  
4029502

This base gel is vegan and free from TPO and HEMA. It's formula strikes the perfect balance between durability and removal.

- 14 day wear
- Moderate soakability
- UV
- UV/LED
- TPO free



## Pro Base/Top Coat

TPO free  
4029500

The Pro GelPolish Base/Top is a versatile 2-in-1 formula for base and top gel polish applications. Simplify your routine without compromising on quality.

- 14 day wear
- Good soakability
- Two in one
- UV
- UV/LED
- TPO free

## Gummy Pro Base

4126136

Suitable as a base gel for gel polish and builder gels. Also recommended for clients requiring extra adhesion, especially when used in combination with Build It Up, Fiber Overlay, or Gummy Colors.

- 21 day wear
- Moderate soakability

## Brilliant Top Gel

TPO free & HEMA free  
4029401

Brilliant Top Gel No Tack HF/TPOF is the ideal top gel for a high shine and tack-free finish. Brilliant Top Gel No Tack HF/TPOF creates the perfect base for your high shine chrome applications.

- 21 day wear
- Moderate soakability
- UV
- UV/LED
- TPO free
- Non-tacky



## Pro Base/Top Coat

TPO free  
4029500

The Pro GelPolish Base/Top is a versatile 2-in-1 formula for base and top gel polish applications. Simplify your routine without compromising on quality.

- 14 day wear
- Good soakability
- Two in one
- UV
- UV/LED
- TPO free

# Top Gels

## LumiGloss Top Gel

No Tack HF  
4029408

LumiGloss Top Gel No Tack HF is a thinner viscosity, low-odor top gel formulated with a crystal-clear shine and lasting durability. Its non-yellowing, no-wipe formula is compatible with LED and Dual Wave lights. LumiGloss Top Gel No Tack HF offers maximum versatility across multiple systems.

- Tack-free finish
- Low-odor
- Non-yellowing
- Flexible
- UV/LED

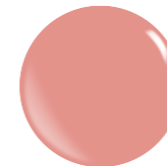




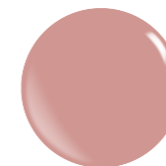
# Fiber Overlay Gels with vitamins

Fiber Overlay Gel is a thicker overlay/base that contains synthetic fibers. This adhesive gel fills up ridges of the natural nail. Enjoy durability and beauty that lasts for 2 weeks. This gel is infused with Vitamin E and Calcium.

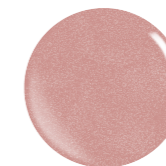
- 14 day wear
- Self-leveling
- Tacky layer
- With vitamins
- Multi-color
- Natural nail
- Soakability
- Flexible



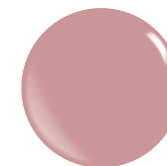
Rosetta  
4014003



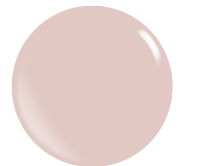
Rosy Pink  
4014002



Rose Nude  
4014006



Barely There  
4014004



Nearly Naked  
4014007



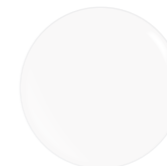
Pink  
4014008



Sweet Pink  
4014010



Milky  
4014009



Cinderella  
4014005



Clear  
4014001













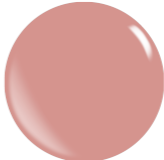











# Gummy Tones Base Gels

Achieve a flawless manicure with the Gummy Base Gel, a thicker, high-adhesion base that fills in ridges for a smooth, even surface. When working in multiple layers, this versatile formula is perfect for enhancing flatter nail shapes, creating a more flattering, sculpted look. Whether you're looking for a perfect overlay gel or to create short extensions, the Gummy Base Gel does it all.

Select a Gummy Base color from the color pallet and top it off with a finishing gel of your choice, or use the Gummy Base as an even color base to enhance the GelPolish colors applied afterward. This long-lasting base ensures up to 14+ days of wear, giving your clients flawless, durable results.

- UV
- UV/LED



 Sweet Pink 4126142	 Milky Pink 4126076	 Pink Cloud 4126062	 Baby Pink 4126063	 Pink 4126089
 Strawberry Cream 4126061	 Cover Cream 4126067	 Natural Shimmer Peach Puff 4126078	 Baby Boom 4126075	 Latte 4126064
 Nude 4126077	 Cover Marshmallow 4126081	 Peach Bubble 4126069	 Cover Beige 4126071	 Summer Sweet 4126060
 Cover Pink 4126082	 Natural Shimmer Peach 4126080	 Cover Tan 4126066	 Natural Shimmer Pink 4126079	 Mauve Rose 4126070
 Pale Pink 4126068	 Milky White 4126074	 Clear 4126072	 French White 4126065	

# Gummy Color Gels

This all-in-one colored base can be applied directly onto natural nails (with the exception of NC colors). Apply two thin coats, finish with your favorite Top Gel, and you're done. The self-leveling formula and perfect viscosity ensures a smooth, even color every time.

- *Self-leveling*
- *Long-lasting adhesion*
- *Flexible*
- *Soakable*
- *14 day wear*
- *UV*
- *UV/LED*



## GUMMY WITH EFFECT



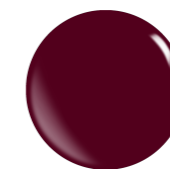
Ice Ice Baby  
4126137



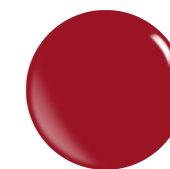
Emperor  
4126144



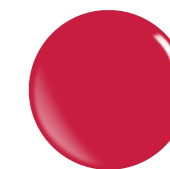
Crimson  
4126145



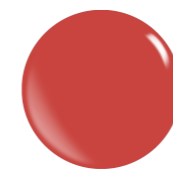
El Salva  
4126143



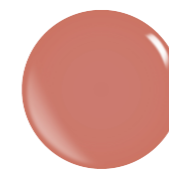
Firebrick  
4126146



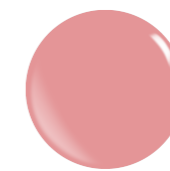
Neon Passion NC  
4126138



Monza  
4126147



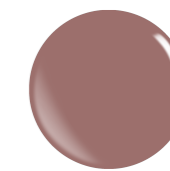
Amour  
4126134



Rosetta  
4126097



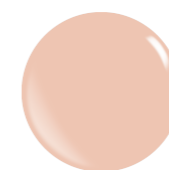
Powder Rose  
4126085



Hemp  
4126135



Peach Sorbet  
4126141



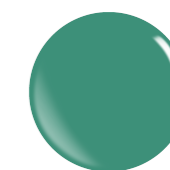
Orange Cream  
4126094



Ellie NC  
4126140



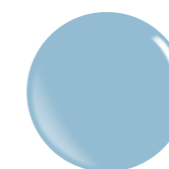
Banana Cream  
4126091



Eucalyptus  
4126139



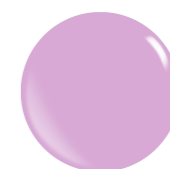
Aqua Cream  
4126090



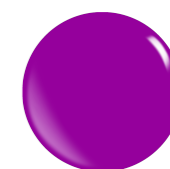
Ice Blue  
4126093



Sweet Lilac  
4126098



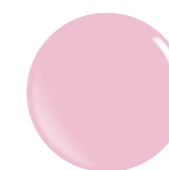
Cotton Candy  
4126092



Ava NC  
4126088



Boysenberry NC  
4126084



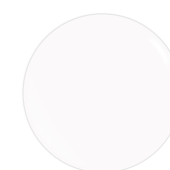
Papillon  
4126096



Pink Cream  
4126095



Cinderella  
4126086



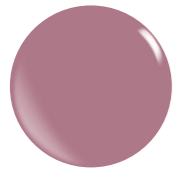
White  
4126087

# Build it up gels

Build It Up gels are low-viscosity LED/UV gels ideal for a natural nail overlay and extensions.

They meet or exceed all known alternative BIAB/Builder In A Bottle adding strength to natural nails, and promoting growth. These self-leveling, easy-to-apply gels are suitable for technicians at every skill level.

- 14 day wear
- Self-leveling
- Tacky layer
- Multi-color
- Natural nail



Cover Pink  
4012209



Pink Pretty  
4012220



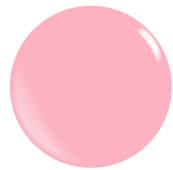
Baby Boom  
4012207



Fairy Dust  
4012223



Natural Pink  
4012224



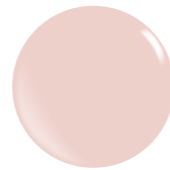
Sweet Pink  
4012211



Pink Cloud  
4012203



Shimmer Peach Puff  
4020763



Cover Cream  
4020764



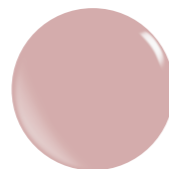
Pink W/ Gold Flakes  
4012216



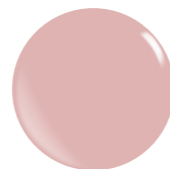
Peach Bubble  
4020769



Pale Pink  
4012208



Nude  
4020761



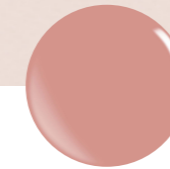
Strawberry Cream  
4012201



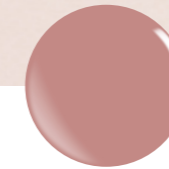
Nude Tan  
4012217



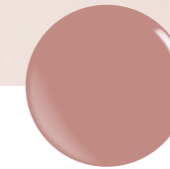
Clear  
4012200



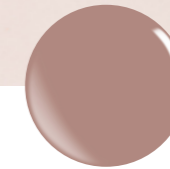
Summer Sweet  
4012205



Marshmallow  
4020760



Soft Maroon  
4012204



Cover Tan  
4020768



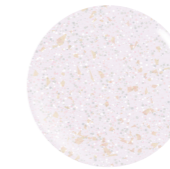
Warm Almond  
4012214



Pearl Pink  
4012221



Mauve Rose  
4012212



Sparkling Angels  
W/ Multi Flakes  
4012219



Sparkling Angels  
4012218



Pearl Gold  
4012222



Soft Beige  
4012210



Latte  
4012202



Cinderella  
4012206



Cinderella SH  
4012215



French White  
4012213



# Color Gels

## Gel polish colors

We have developed a new TPO and HEMA free Gel Polish in a wide variety of colors. Our new formulation presents added features & benefits for the professional nail market and is available already.

This Gel Polish offers good coverage and faster removal. It is solvent-free and non-hazardous.

- 3 step
- UV
- New formula
- UV/LED
- Flexible

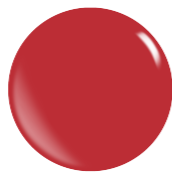




Sparkling Red



De-Ly-La



Samba



Milano Red



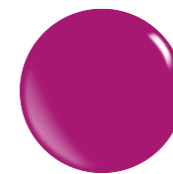
Ferrari Red **NC**



Lingonberry **NC**



Boysenberry **NC**



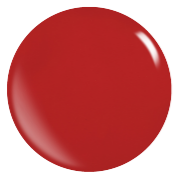
Flower Power **NC**



Viva Voila



Homecoming



Red Ginger



Jazberry Jam



Monza



Christy **NC**



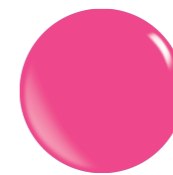
Be Bad **NC**



True Love



Charmed



Jolt



Mexican Pink **NC**



Bohemian Pink **NC**



Cupido



Pink Wow **NC**



Neon Passion **NC**



Fay **NC**



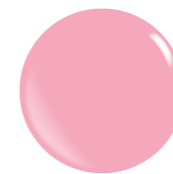
Fay with Glitter **NC**



\*Bubble Gum



Sachet Pink **NC**



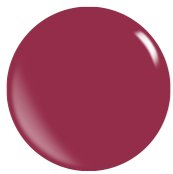
Prism Pink



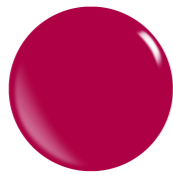
Pink Chiffon



Fairy Tale



Scooter



Love Potion **NC**



Heartless



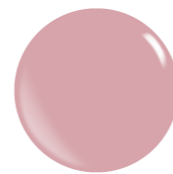
Happy Glow



Gerber Daisy



Pink Pretty



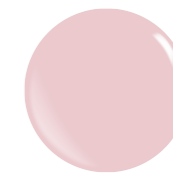
Perfect Mani



Marshmallow



Papillon



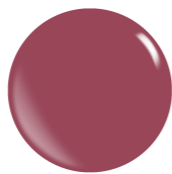
Sweet Cheeks



Puce



Sindon



Romantic Dark Rose



Instant Crush



Bouquet



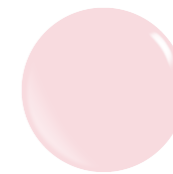
Metallic Iridescent Red



Babydoll Pink



Rosetta **SH**



Lisboa



Heather



Tickle Me Pink



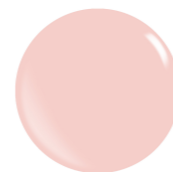
Peach Bud **NC**



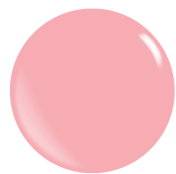
Piggy Pink



Perfect Match



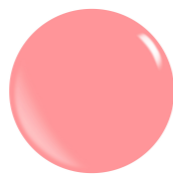
Sepia Rose



Rose Quartz



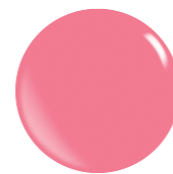
Lychee Rose **SH**



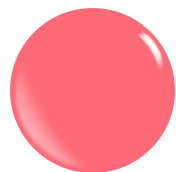
Apricot Echo **NC**



Flower Child



Brilliant Pastel  
Magenta **NC**



Candy Pop **NC**



Ibiza



Watermelon Pink **NC**



Muse



Happy Smile **NC**



Flair



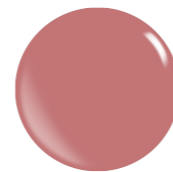
Love Lockdown



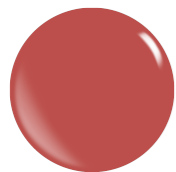
Can Can



Rose Copper Glitter



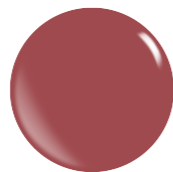
Mauve Wood



Pompeian Red



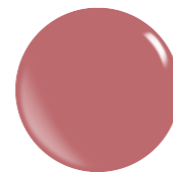
Flamenco



Chili Oil

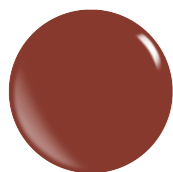


Red Damast

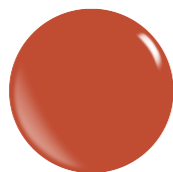


Desert Rose





Burnt Henna



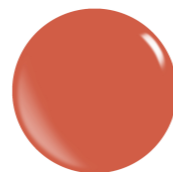
Pumpkin



Orange Mood



Peach Sorbet



Coral Dream



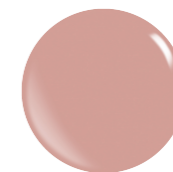
Michael Angel Oh



Labyrinth **SH**



Blush w. Heavy Goldflakes



Angora



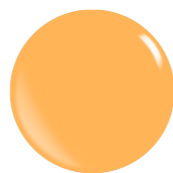
Avalon



\*Mango



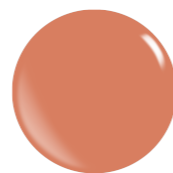
Emma **NC**



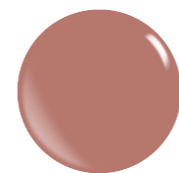
Pomelo Crush



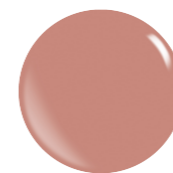
Fields of Gold



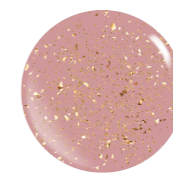
Mecca Orange



Cool Pink



Crepe



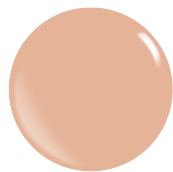
Blush w. Goldflakes



Carisma



Hemp



Cafe Creme



Exposed **SH**



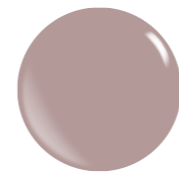
Sandy Beach



Peaches



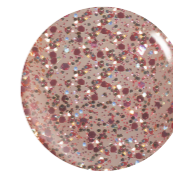
Heavy Glitter Rose



Woodrose



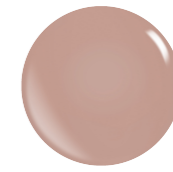
Smoked Topaz



Rose & Gold Glitter



Mr. Grey



Cashmere Wrap



Nearly Naked **SH**



Barely There **SH**



Nude **SH**



I'm Blushing



Blushing



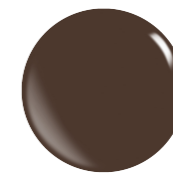
Sage



\*Toast



Vintage Brown



Oyster



Mochaccino



Bare **SH**



Grapefruit



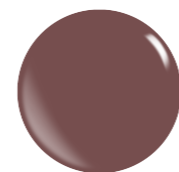
Pandora **SH**



Hazelnut



Amour **SH**



Plum Wine



B.Y.O.B.



Toffee



Lotus



Sommelier



Satin Slip



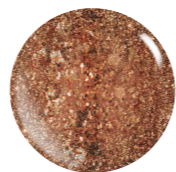
Aluminum Rose



Earth



Uncorked



Heavy Glitter Copper



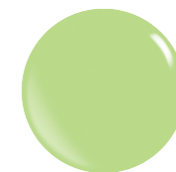
Mirabelle



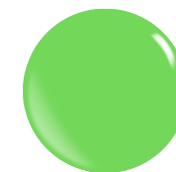
Metallic Iridescent Green



Organic



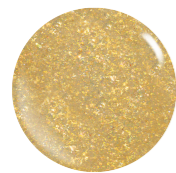
Brilliant Pastel Green NC



Classic Green NC



Yellow Gold



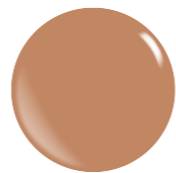
Elegance



Gold Jewel



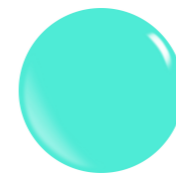
Bronze



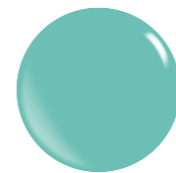
Latte



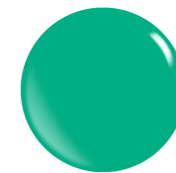
Caribbean Sea



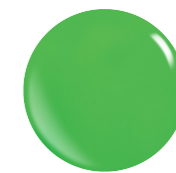
Billiard NC



Atlantis



Eucalyptus



Morgan NC



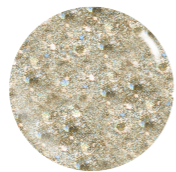
Heavy Glitter Gold



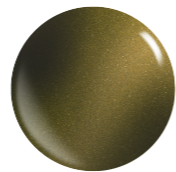
Mystique



Shimmering Sand Glitter



Cocktail Gold



Gold Cat Eye



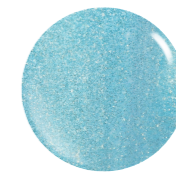
Jade



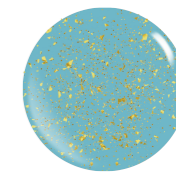
Let's Party



Magic Mint



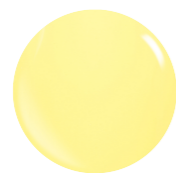
Seabreeze



Atlantis Gold Flake



Metallic Iridescent Gold



Lemonade



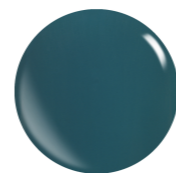
Ellie NC



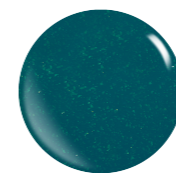
Oasis



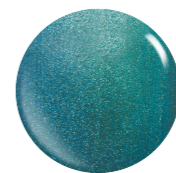
Guacamole



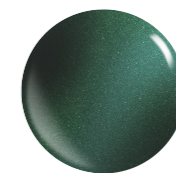
Paradiso



Cyan



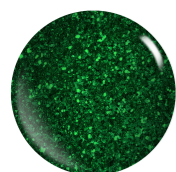
Aluminum Aqua



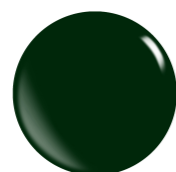
Green Cat Eye



Glamour Green



Heavy Glitter Green



Guccy Green



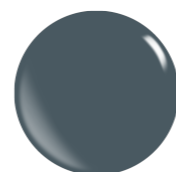
Mysterious Green



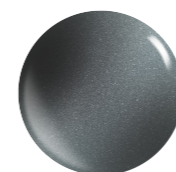
Underworld



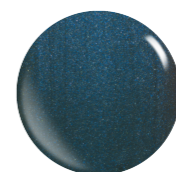
Military Olive



Dark Forest



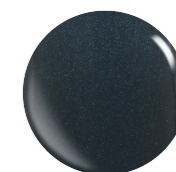
Blue/Green Cat Eye



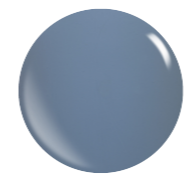
Catalina Blue



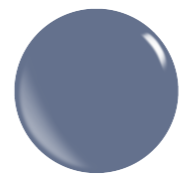
Shadow



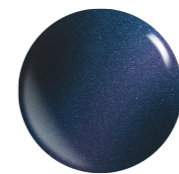
Petrol



Rain



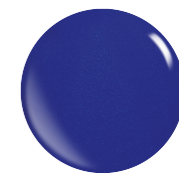
Citadel



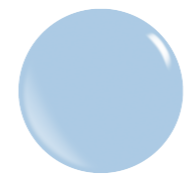
Blue/Purple Cat Eye



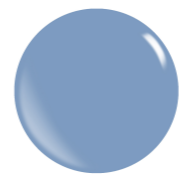
Black Mirror



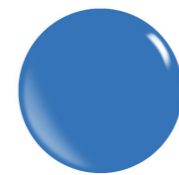
Bay Blue



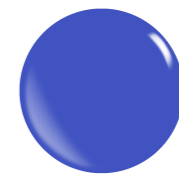
Brilliant Pastel Blue NC



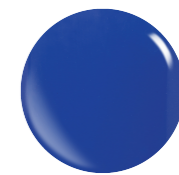
Blue Heron



It's a Boy



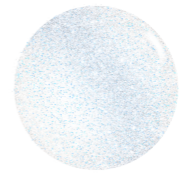
Strong Blue



Electric Blue



Iridescent Blue Effect Light



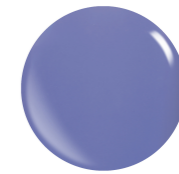
Iridescent Blue Effect Heavy



Metallic Iridescent Blue



Bright Sky's



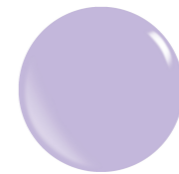
Fortuna



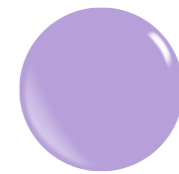
Metallic Iridescent Violet



Gray Lilac



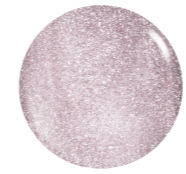
Purple Heather



Lavender Crunch



Iris



LF-02



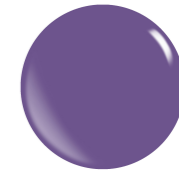
Moiré



Stronger



Mascarade



Aura



Peony



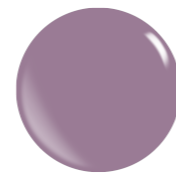
Crocus



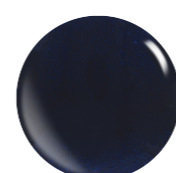
Brilliant Pastel Violet NC



LF-03



Rosy Brown



Mirage



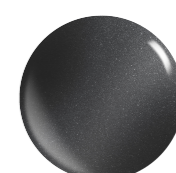
New Year's Eve



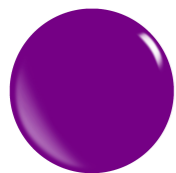
Anthracite



Asphalt



Silver Cat Eye



Byzantium NC



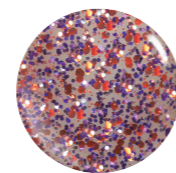
Pink/Purple Cat Eye



Fuchsia Glitter



LF-07



Pink/Purple/Orange Glitter



Electric Black



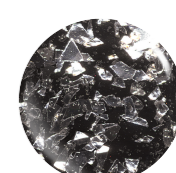
Black



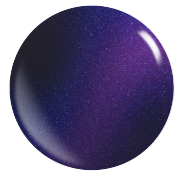
Ash



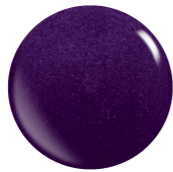
Bronze Foil



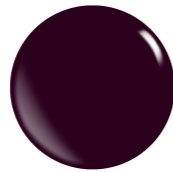
Silver Foil



Indigo Cat Eye



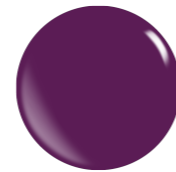
Affair



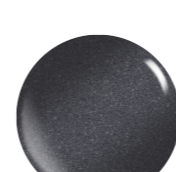
Plum



LF-06



Plum Caspia



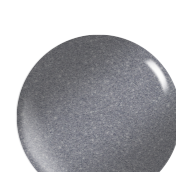
Dim Gray



Shanghai Mist



LF-05



Gunmetal



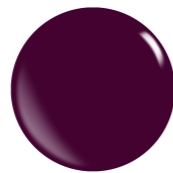
Stormy Sea



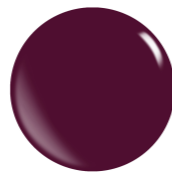
Flexitarian



Rich Raisin



NY Nights NC



Purple Potion



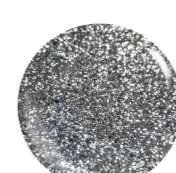
Gothic Grape



Diamond Mine



Silver Cloud



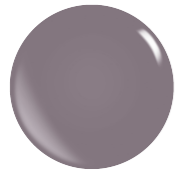
Silver Dust



End of the Rainbow



Silver Glitter



Fossil



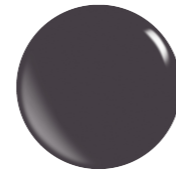
Mamba



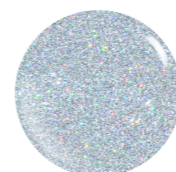
Pinot Noir



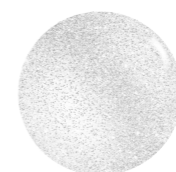
Vertigo



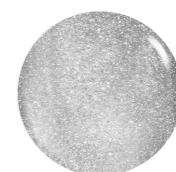
Smokemist



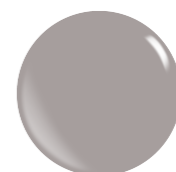
Heavy Glitter Holo Silver



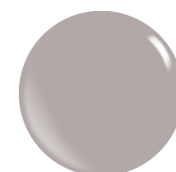
Limited Edition



LF-01



Rock Ridge



Mushroom



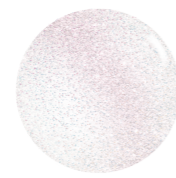
Stripped



Cinderella w. Goldflakes



Ice Queen



Iridescent Glam Effect Heavy



Iridescent Glam Effect Light



Made in Nature



Pearl Drop



White Smoke



Cinderella SH



X-White



White



GelPolish Clear



GelPolish Clear for Light Colors



LF Clear GelPolish NC



# Dipping Powder Glue

The system works with a specially formulated activator, base, and topcoat combined with a fine acrylic powder to create a strong, colored nail that lasts at least two full weeks. It is a great alternative to gel polish. Quick and easy to apply for maximum profitability.



**Dipping Glue Top 300**



**Dipping Glue Base 300**

- ✓ **Strength** – Produces a much stronger, more durable finish than gel polish.
- ✓ **Easy to apply** – Anyone can do it.
- ✓ **Lightweight** – The final result is a very natural-looking, thin nail with all the benefits and strength of an acrylic nail.
- ✓ **Odor-free** – Because the system uses adhesive instead of acrylic monomer.
- ✓ **Speed** – A full set of nails can be applied in 20 to 25 minutes.
- ✓ **Versatile** – Can be applied to natural nails or short tips.
- ✓ **MOQ** – 112 units

# Sustainability

At Interfilling, we take pride in offering packaging made with High-Density Polyethylene (HDPE) plastic – a standout choice for environmentally responsible packaging. Our HDPE plastic is made from recycled materials, and it's also 100% recyclable, emitting no harmful fumes into the environment. Interfilling actively works on reducing our CO<sub>2</sub> footprint and waste streams, optimizing packaging materials, and increasing the use of recyclable and more sustainable materials.

## Terms & Conditions

### Filling & Packaging Services

- ✓ For product volumes of 1,000 ml or more, we are able to fill products into your own packaging.
- ✓ An overview of our standard packaging options is available on our webshop: [www.theplatform.interfilling.com](http://www.theplatform.interfilling.com)

### Product Samples

- ✓ Samples of all products are available upon request and are intended for testing purposes only.

### Regulatory Information

- ✓ Safety Data Sheets (SDS) are available for all products and can be provided upon request.

### Pricing

- ✓ For the most up-to-date pricing information, please contact your Interfilling representative to request the latest price list.
- ✓ The minimum order value is €699, and orders are subject to prepayment conditions.

### Returns

- ✓ All returns must be authorised in advance. Please contact your sales representative before returning any items.





# INTER FILLING

Lichtstraat 40  
5349CA Oss, The Netherlands  
+31 412 480 352  
[business@interfilling.com](mailto:business@interfilling.com)  
[www.interfilling.com](http://www.interfilling.com)

